

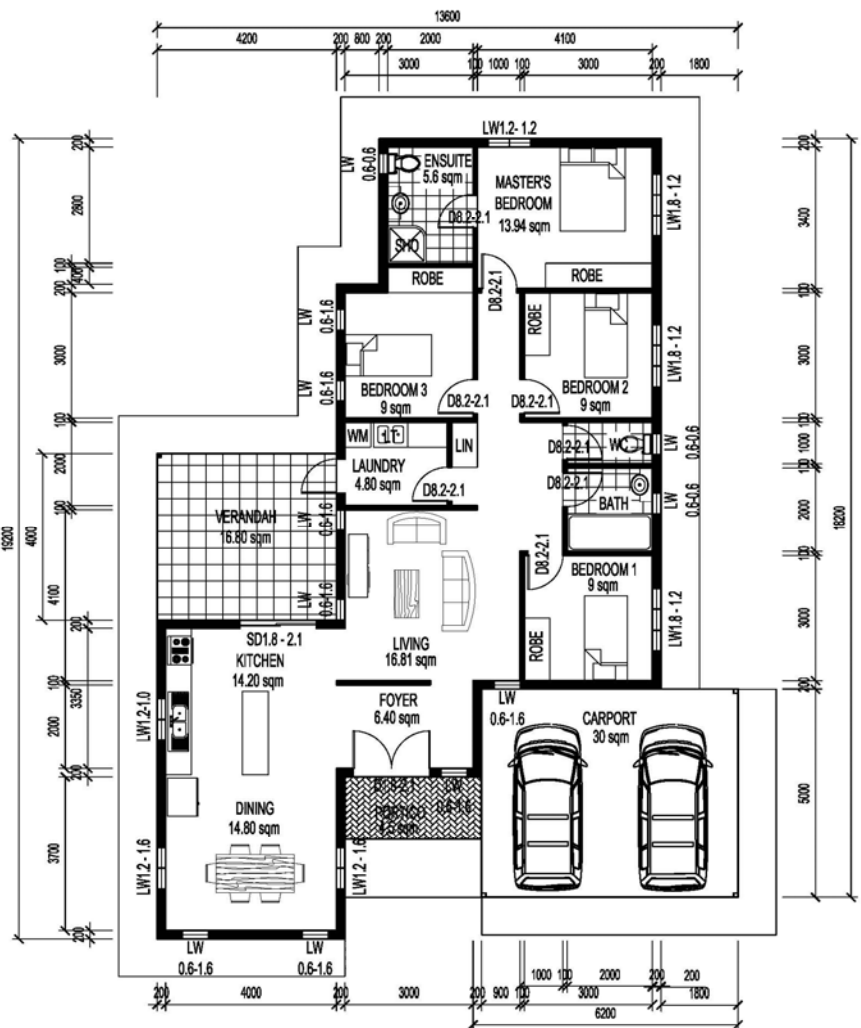


GOULBURN 1



DESIGN OVERVIEW

- The GOULBURN Series is a spacious home offering exceptional finishes
- Consisting of 4 Bedrooms and 2 Bathrooms
- Master Bedroom with Ensuite
- Double Carport
- Open plan living opening to the outdoor Verandah
- This design sits at 205.20sqm
- Vanguard Homes designs can be modified to customer requirements.



Area Analysis (m²)

Floor Area	142.10
Carport	37.80
Verandah	20.40
Portico	4.90
TOTAL	205.20sqm

**Contact our
office for further information
Ph : 0427 925 590**

